

==== Shimadzu LabSolutions Analysis Report =====

Sample Name : PH_NT_080925_Acetol_130_0
 Sample ID :
 Data Filename : PH_NT_080925_Acetol_130_0_080925_Acetol_130_SFB_B_ST1_0.8 mL_45 min_Sta
 Method Filename : SFB_B_ST1_0.8 mL_45 min_Start.lcm
 Batch Filename : 080925_Acetol_130.lcb
 Vial # : 1-28 Sample Type : Unknown
 Injection Volume : 10 uL
 Date Acquired : 9/9/2025 3:59:22 AM Acquired by : System Administrator
 Date Processed : 9/9/2025 4:44:22 AM Processed by : System Administrator

<Method>

<<Header>>

Generated : 4/24/2024 3:47:23 PM
 GeneratedBy : System Administrator
 Modified : 9/8/2025 4:31:12 PM
 ModifiedBy : System Administrator

<<System Controller>>

Model : SCL-40
 Event1 : Off
 Event2 : Off
 Sample Load Timing : Off

<<Data Acquisition>>

LC Stop Time : 45.00 min
 Detector A Name : Detector A
 Detector A Sampling Frequency : 2 Hz
 Detector A Start Time : 0.00 min
 Detector A End Time : 45.00 min

<<Pump>>

Mode : Isocratic flow
 Pump A : LC-40D
 Pump A Flow/Pressure : Flow
 Pump System A Flow : 0.8000 mL/min
 Pump System A Flow Slope : 20.00 min
 Pump A PressMax : 90 bar
 Pump A PressMin : 0 bar
 Pump A Valve Model : Switching Valve
 Pump A Valve : B
 Pump A Compressibility Setting : On
 Pump A Mobile Phase Settings : 0.45 /GPa

<<Autosampler>>

Autosampler Model : SIL-40
 Enable Autosampler : Use
 Rinse Type : External only
 Specify Plate : Off
 Rinsing Volume : 500 uL
 Cut Off Loop : Off
 Specify Needle Stroke : Off
 Rinsing Speed : 35 uL/sec
 Sampling Speed : 5.0 uL/sec
 Rinse Port R0 Purge Time : 2.0 min
 Measuring Line Purge Time : 5.0 min
 Rinse Mode : Before and after aspiration
 Rinse Dip Time : 0 sec
 Measuring Line Purge Volume : 100 uL
 Air Gap Volume : Off
 Rinse Port Liquid : R0

<<Sample Pretreatment>>

Mode : Standard

<<Oven>>

Oven Model : CTO-40C
 Enable Oven : Use
 Oven Temperature : 25 C
 Maximum Temperature : 105 C

Check %Dev(Standard) : No
 Check Accuracy[%](Standard) : No
 Check %Dev(Control) : No
 Check Accuracy[%](Control) : No
 Check %Dev(Additive) : No
 Check Accuracy[%](Additive) : No
 Check %Dev(Unknown) : No
 Check Accuracy[%](Unknown) : No
 Check Quantitation Limit : No
 Check Detect Limit : No

<<Compound Table>>

<Detector A>

ID# : 1
 Name : Methanol
 Type : Target
 Channel : Ch1
 Retention Time : 14.400 min
 Retention Index : 0
 Concentration : [1]=3.016738 [2]=1.049395 [3]=0.4943277
 [4]=0.2893701 [5]=0.1127578 [6]=0.06136267
 [7]=0.01619725 [8]=3.016738 [9]=1.049395
 [10]=0.4943277 [11]=0.2893701 [12]=0.1127578
 [13]=0.06136267 [14]=0.01619725
 Peak Selection : Default(Closest Peak)
 Calculated by : Default(Area)
 Curve Fit Type : Default(Linear)
 Zero : Default(Not Forced)
 Weight : Default(None)
 Window/Band : Default(Window)
 Spiked : 0.000
 1st Coefficient : 4.720087e+005
 Intersection : 1.693726e+003
 Correction Factor : 1.000000
 Standard concentration factor : 1.000000

ID# : 2
 Name : Glycerin
 Type : Target
 Channel : Ch1
 Retention Time : 10.000 min
 Retention Index : 0
 Concentration : [1]=2.958375 [2]=1.078646 [3]=0.5353454
 [4]=0.3066948 [5]=0.114594 [6]=0.05901699
 [7]=0.0117174 [8]=2.958375 [9]=1.078646
 [10]=0.5353454 [11]=0.3066948 [12]=0.114594
 [13]=0.05901699 [14]=0.0117174
 Peak Selection : Default(Closest Peak)
 Calculated by : Default(Area)
 Curve Fit Type : Default(Linear)
 Zero : Default(Not Forced)
 Weight : Default(None)
 Window/Band : Default(Window)
 Spiked : 0.000
 1st Coefficient : 7.326784e+006
 Intersection : 2.573900e+005
 Correction Factor : 1.000000
 Standard concentration factor : 1.000000

ID# : 3
 Name : n-Propanol
 Type : Target
 Channel : Ch1
 Retention Time : 20.000 min
 Retention Index : 0
 Concentration : [1]=3.02526 [2]=1.092217 [3]=0.5139845
 [4]=0.3105323 [5]=0.09785473 [6]=0.04497364
 [7]=0.01087275 [8]=3.02526 [9]=1.092217
 [10]=0.5139845 [11]=0.3105323 [12]=0.09785473
 [13]=0.04497364 [14]=0.01087275
 Peak Selection : Default(Closest Peak)
 Calculated by : Default(Area)
 Curve Fit Type : Default(Linear)
 Zero : Default(Not Forced)
 Weight : Default(None)
 Window/Band : Default(Window)
 Spiked : 0.000
 1st Coefficient : 3.955755e+006
 Intersection : -2.585461e+004

Correction Factor : 1.000000
 Standard concentration factor : 1.000000

ID# : 4
 Name : 1,2 Propandiol
 Type : Target
 Channel : Ch1
 Retention Time : 12.400 min
 Retention Index : 0
 Concentration : [1]=2.977546 [2]=1.016412 [3]=0.5030017
 [4]=0.3027638 [5]=0.1023958 [6]=0.04970167
 [7]=0.01157971 [8]=2.977546 [9]=1.016412
 [10]=0.5030017 [11]=0.3027638 [12]=0.1023958
 [13]=0.04970167 [14]=0.01157971

Peak Selection : Default(Closest Peak)
 Calculated by : Default(Area)
 Curve Fit Type : Default(Linear)
 Zero : Default(Not Forced)
 Weight : Default(None)
 Window/Band : Default(Window)
 Spiked : 0.000
 1st Coefficient : 5.771075e+006
 Intersection : 6.007717e+004
 Correction Factor : 1.000000
 Standard concentration factor : 1.000000

ID# : 5
 Name : 1,3 Propandiol
 Type : Target
 Channel : Ch1
 Retention Time : 13.000 min
 Retention Index : 0
 Concentration : [1]=2.976375 [2]=0.9968958 [3]=0.4990984
 [4]=0.2900131 [5]=0.10734 [6]=0.04944145
 [7]=0.0100184 [8]=2.976375 [9]=0.9968958
 [10]=0.4990984 [11]=0.2900131 [12]=0.10734
 [13]=0.04944145 [14]=0.0100184

Peak Selection : Default(Closest Peak)
 Calculated by : Default(Area)
 Curve Fit Type : Default(Linear)
 Zero : Default(Not Forced)
 Weight : Default(None)
 Window/Band : Default(Window)
 Spiked : 0.000
 1st Coefficient : 5.532080e+006
 Intersection : 6.014722e+004
 Correction Factor : 1.000000
 Standard concentration factor : 1.000000

ID# : 6
 Name : iso-Propanol
 Type : Target
 Channel : Ch1
 Retention Time : 16.825 min
 Retention Index : 0
 Concentration : [1]=3.03666 [2]=1.003405 [3]=0.5418687
 [4]=0.3101858 [5]=0.1067771 [6]=0.04972951
 [7]=0.01397083 [8]=3.03666 [9]=1.003405
 [10]=0.5418687 [11]=0.3101858 [12]=0.1067771
 [13]=0.04972951 [14]=0.01397083

Peak Selection : Default(Closest Peak)
 Calculated by : Default(Area)
 Curve Fit Type : Default(Linear)
 Zero : Default(Not Forced)
 Weight : Default(None)
 Window/Band : Default(Window)
 Spiked : 0.000
 1st Coefficient : 3.797216e+006
 Intersection : -2.284739e+004
 Correction Factor : 1.000000
 Standard concentration factor : 1.000000

ID# : 7
 Name : Hydroxyacetone
 Type : Target
 Channel : Ch1
 Retention Time : 13.300 min
 Retention Index : 0
 Concentration : [1]=2.855514 [2]=0.9609004 [3]=0.4875675

	[4]=0.3072624	[5]=0.1038742	[6]=0.04860286
	[7]=0.009361501	[8]=2.855514	[9]=0.9609004
	[10]=0.4875675	[11]=0.3072624	[12]=0.1038742
	[13]=0.04860286	[14]=0.009361501	

Peak Selection : Default(Closest Peak)
 Calculated by : Default(Area)
 Curve Fit Type : Default(Linear)
 Zero : Default(Not Forced)
 Weight : Default(None)
 Window/Band : Default(Window)
 Spiked : 0.000
 1st Coefficient : 4.865699e+006
 Intersection : 5.855022e+004
 Correction Factor : 1.000000
 Standard concentration factor : 1.000000

ID# : 8
 Name : Ethylenglykol
 Type : Target
 Channel : Ch1
 Retention Time : 12.200 min
 Retention Index : 0
 Concentration : [1]=2.933794 [2]=1.030353 [3]=0.4898163
 [4]=0.3033639 [5]=0.09840986 [6]=0.059971
 [7]=0.01068632 [8]=2.933794 [9]=1.030353
 [10]=0.4898163 [11]=0.3033639 [12]=0.09840986
 [13]=0.059971 [14]=0.01068632

Peak Selection : Default(Closest Peak)
 Calculated by : Default(Area)
 Curve Fit Type : Default(Linear)
 Zero : Default(Not Forced)
 Weight : Default(None)
 Window/Band : Default(Window)
 Spiked : 0.000
 1st Coefficient : 4.284813e+006
 Intersection : 4.449721e+003
 Correction Factor : 1.000000
 Standard concentration factor : 1.000000

ID# : 9
 Name : Ethanol
 Type : Target
 Channel : Ch1
 Retention Time : 16.000 min
 Retention Index : 0
 Concentration : [1]=3.010594 [2]=1.02339 [3]=0.5257763
 [4]=0.2939754 [5]=0.0961865 [6]=0.04960971
 [7]=0.01299818 [8]=3.010594 [9]=1.02339
 [10]=0.5257763 [11]=0.2939754 [12]=0.0961865
 [13]=0.04960971 [14]=0.01299818

Peak Selection : Default(Closest Peak)
 Calculated by : Default(Area)
 Curve Fit Type : Default(Linear)
 Zero : Default(Not Forced)
 Weight : Default(None)
 Window/Band : Default(Window)
 Spiked : 0.000
 1st Coefficient : 2.109543e+006
 Intersection : -9.590194e+003
 Correction Factor : 1.000000
 Standard concentration factor : 1.000000

ID# : 10
 Name : Propionsäure
 Type : Target
 Channel : Ch1
 Retention Time : 13.600 min
 Retention Index : 0
 Concentration : [1]=2.962704 [2]=0.9915078 [3]=0.5019324
 [4]=0.3085198 [5]=0.1036906 [6]=0.04835313
 [7]=0.01168534 [8]=2.962704 [9]=0.9915078
 [10]=0.5019324 [11]=0.3085198 [12]=0.1036906
 [13]=0.04835313 [14]=0.01168534

Peak Selection : Default(Closest Peak)
 Calculated by : Default(Area)
 Curve Fit Type : Default(Linear)
 Zero : Default(Not Forced)
 Weight : Default(None)
 Window/Band : Default(Window)

Spiked : 0.000
 1st Coefficient : 4.601450e+006
 Intersection : -1.609005e+003
 Correction Factor : 1.000000
 Standard concentration factor : 1.000000

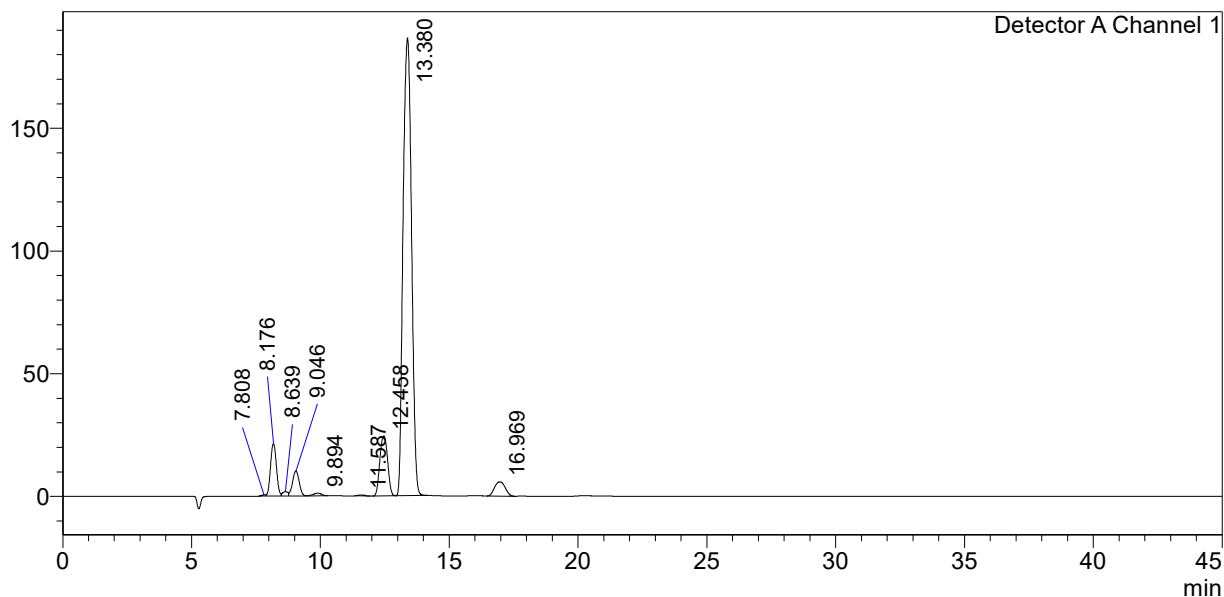
<<Column Performance>>

<Detector A>

Calculation Method : USP
 Unretained Peak Time : Time at 1st Peak
 Column Length : 150 mm
 Calculate Identified Peaks Only : Off
 Calculation of Relative Retention Time : Off

<Chromatogram>

mV



<Peak Table>

Detector A Channel 1

Peak#	Ret. Time	Area	Height	Conc.	Unit	Mark	Name
1	7.808	5604	520	0.000			
2	8.176	336298	21318	0.000		V	
3	8.639	25853	1777	0.000		V	
4	9.046	182090	10096	0.000		V	
5	9.894	23756	1063	-0.032	mol/L	V	Glycerin
6	11.587	6970	387	0.001	mol/L		Ethylenglykol
7	12.458	515583	24498	0.079	mol/L		1,2 Propandiol
8	13.380	4259122	186491	0.863	mol/L		Hydroxyacetone
9	16.969	166721	5810	0.050	mol/L		iso-Propanol
Total		5521998	251960				